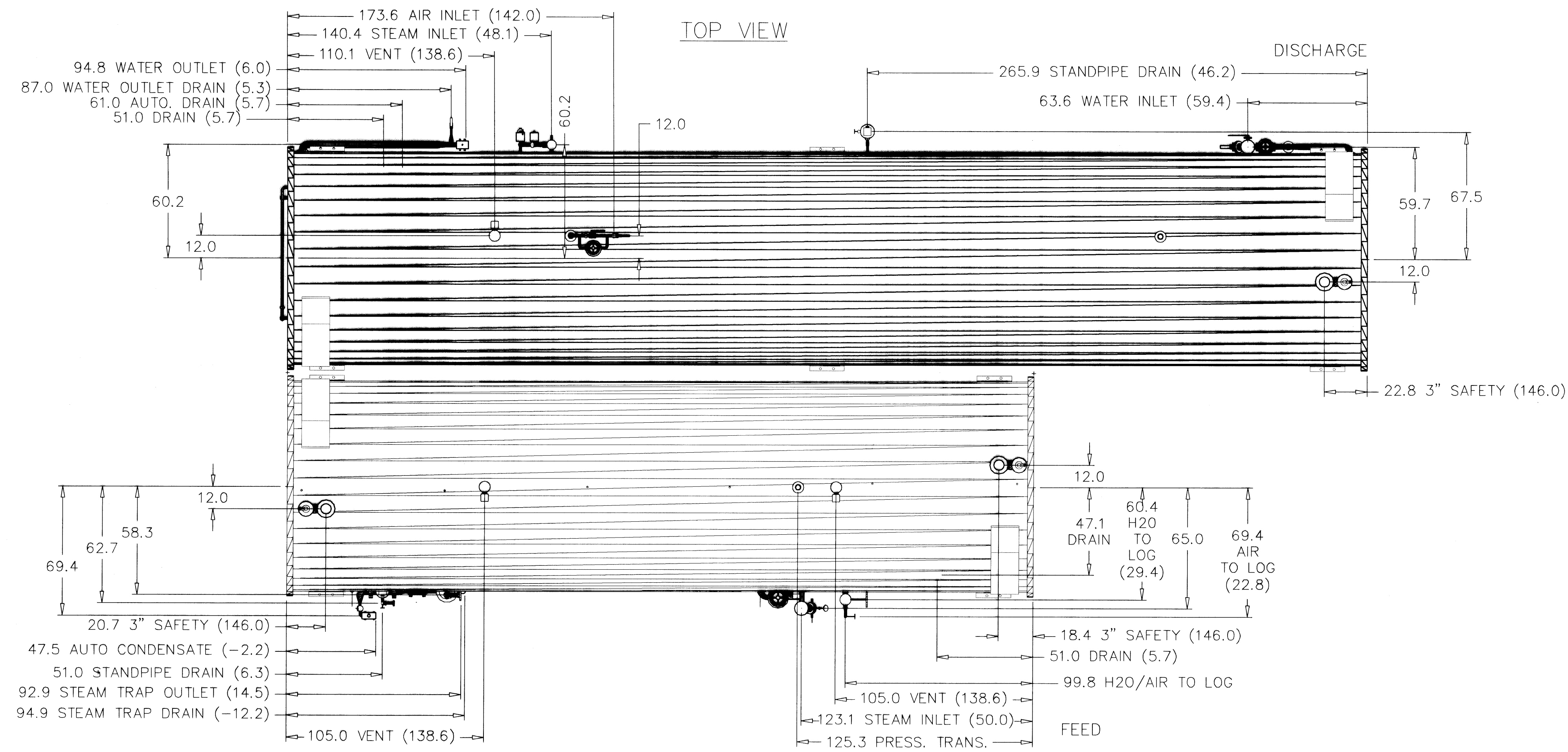


TOP VIEW



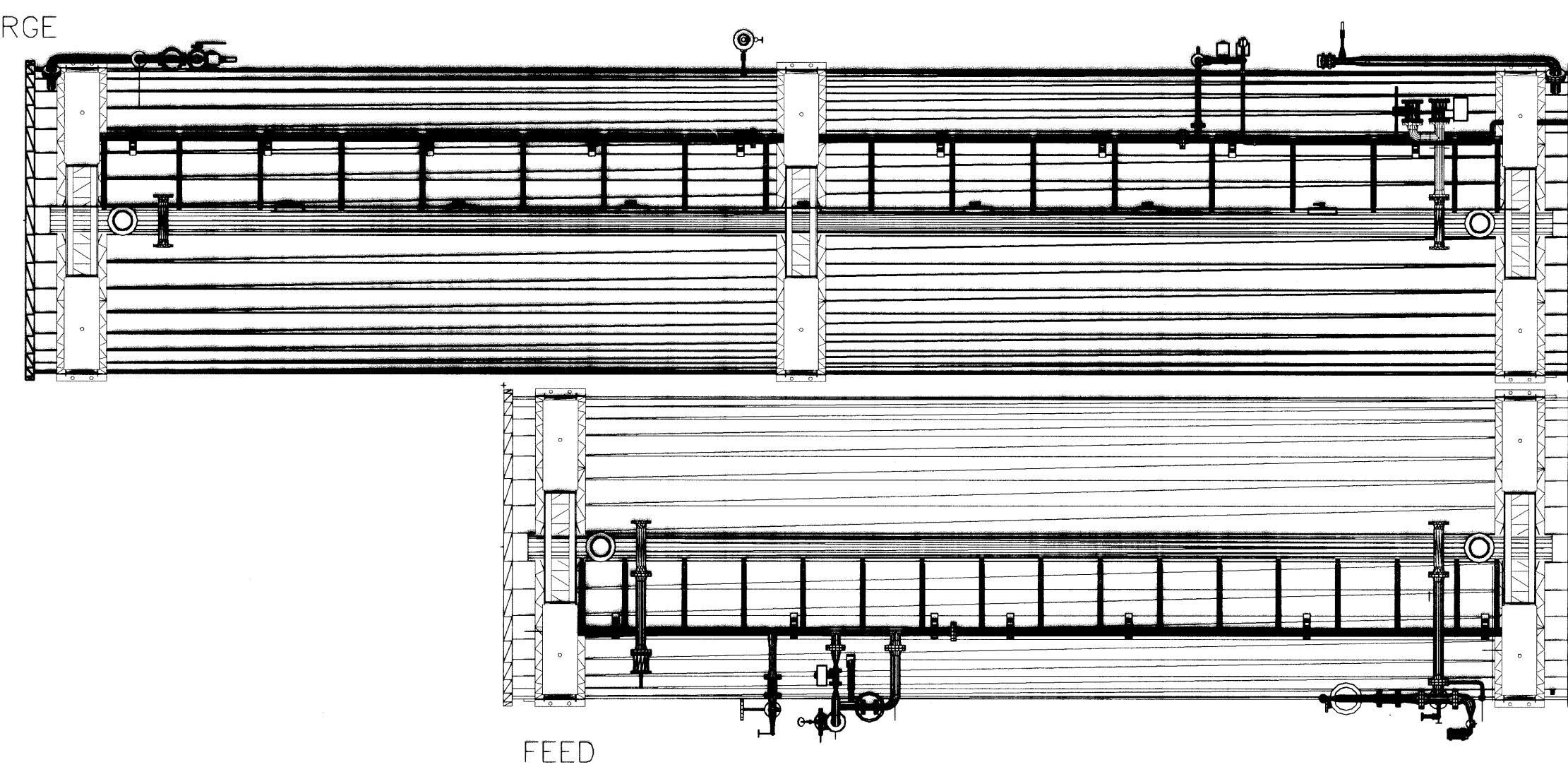
COOKER

UTILITY	CONNECTION SIZE
COOKER SAFETIES (2)	4" DRIP PAN ELBOW
COOKER STEAM INLET (1)	3" 150# FLANGE
COOKER STEAM INLET #2 (1)	2-1/2" 150# FLANGE
COOKER 3" DRAIN (1)	3" 150# FLANGE
6" TROUGH CLEANOUT (2)	6" 150# FLANGE
COOKER VENT (2)	2" 150# FLANGE
WATER TO COOKER LOG (1)	2" 150# FLANGE
AIR TO COOKER LOG (1)	1" NPT FEMALE
AUTO CONDENSATE DRAIN (1)	3/4" NPT FEMALE
STANDPIPE DRAIN (1)	3/4" NPT FEMALE
STEAM TRAP OUTLET (1)	2" 150# FLANGE
STEAM TRAP DRAIN (1)	3/4" NPT FEMALE

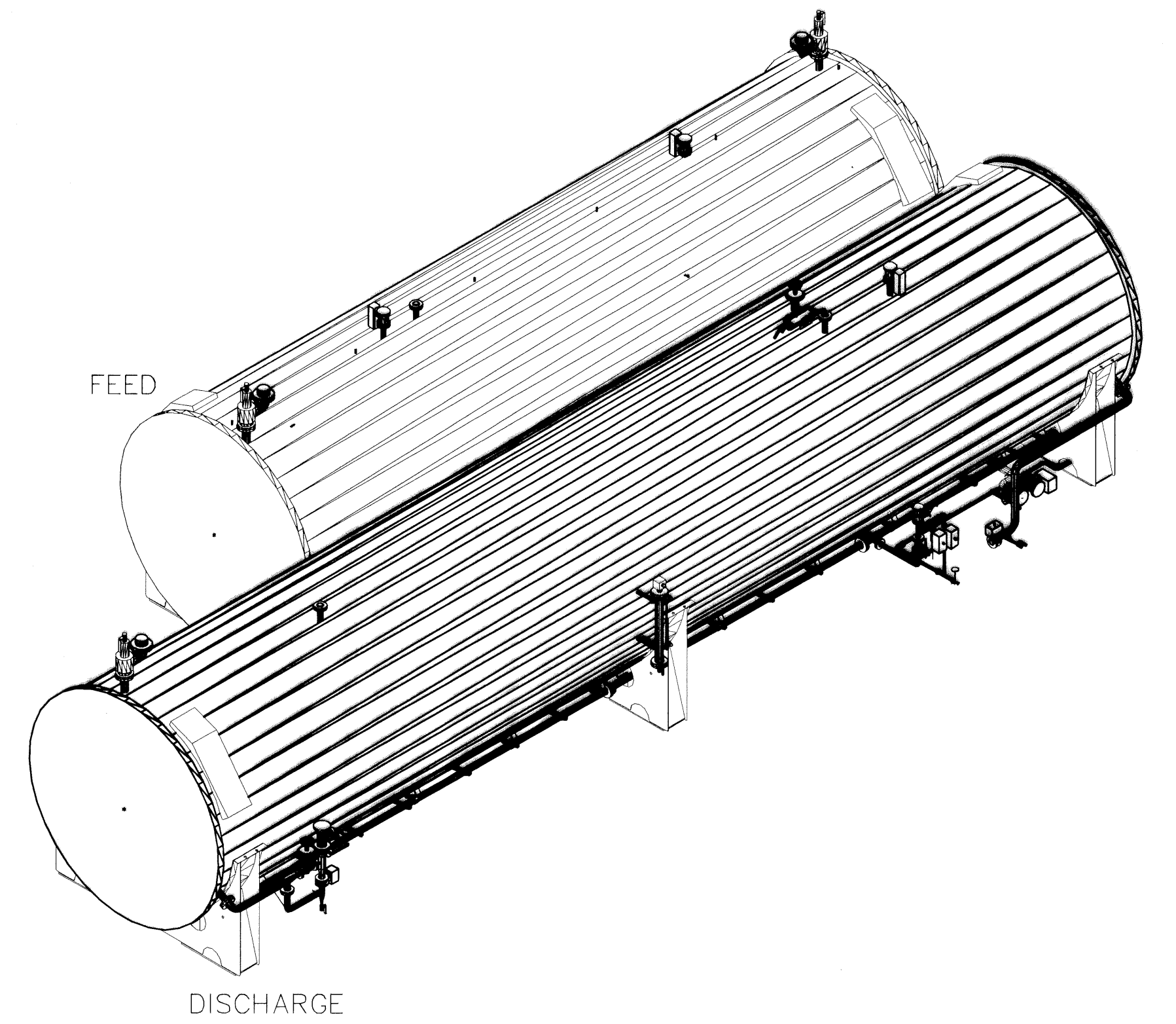
COOLER

UTILITY	CONNECTION SIZE
COOLER SAFETIES (1)	4" DRIP PAN ELBOW
COOLER STEAM INLET (1)	1-1/2" 150# FLANGE
COOLER STEAM INLET DRAIN (1)	1" NPT FEMALE
COOLER 3" MANUAL DRAIN (1)	3" 150# FLANGE
COOLER 3" AUTO DRAIN (1)	3" 150# FLANGE
COOLER VENT (1)	2" 150# FLANGE
COOLER WATER INLET (2)	3" 150# FLANGE
COOLER WATER INLET DRAIN (2)	3/4" NPT FEMALE
COOLER WATER OUTLET (1)	2" NPT FEMALE
COOLER WATER OUTLET DRAIN (1)	3/4" NPT FEMALE
COOLER AIR INLET (1)	1" NPT FEMALE
6" TROUGH CLEANOUT (4)	6" 150# FLANGE
STANDPIPE DRAIN (1)	3/4" NPT FEMALE

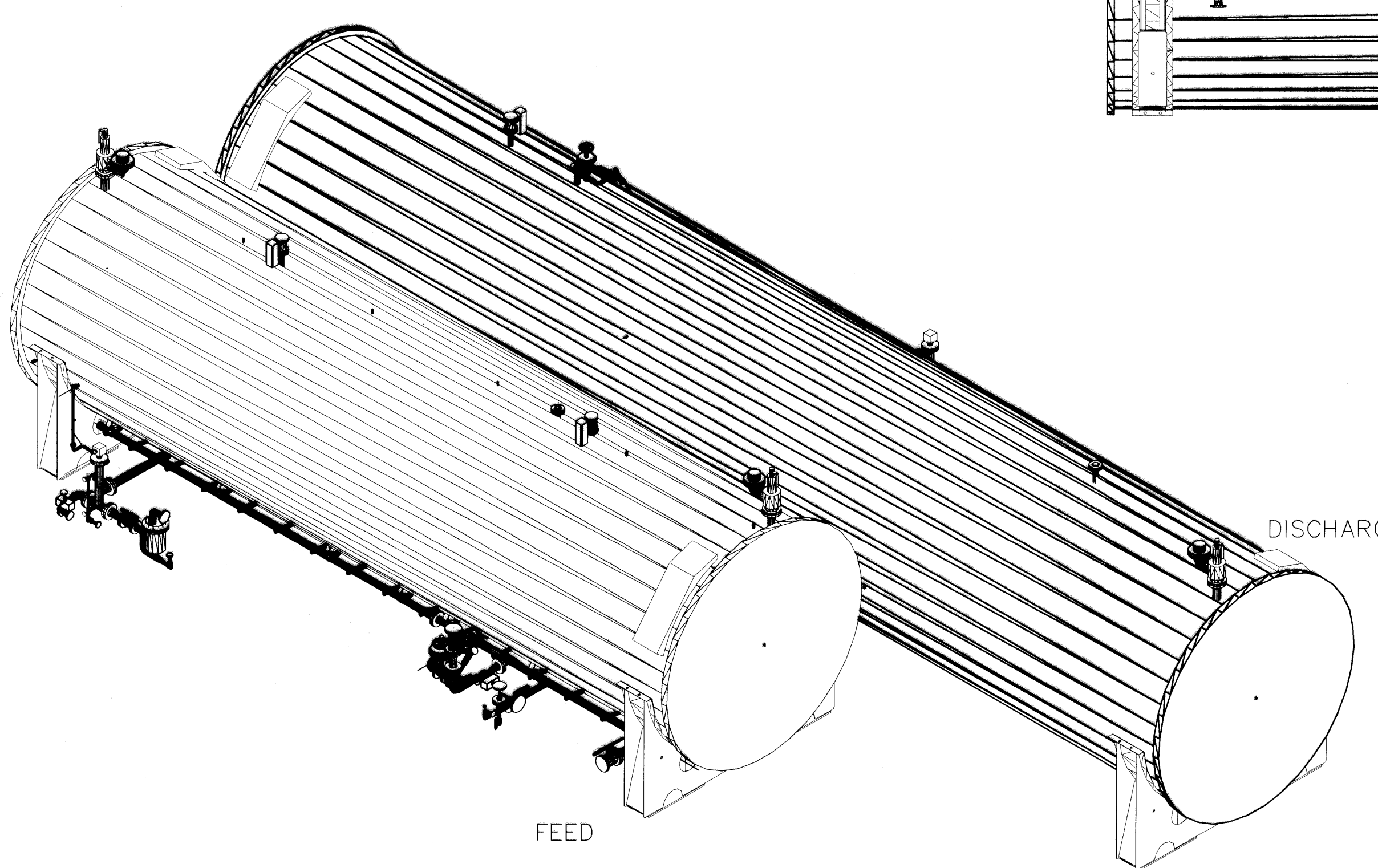
DISCHARGE



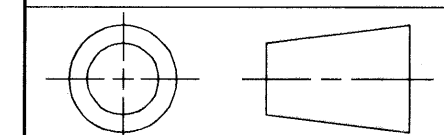
BOTTOM VIEW



NOTE:
ELEVATIONS ARE IN PARENTHESES
AND ARE REFERENCED FROM THE
BOTTOM OF THE LEGS.



THIRD ANGLE PROJECTION



This drawing and all information contained hereon is the property of FMC Technologies, Inc. It shall not, wholly or in part, be copied, reproduced or used by others without express written permission from FMC Technologies, Inc.

SYMBOL	DESCRIPTION	DATE	BY
SEE SHEET 1	TS	012203	
SEE SHEET 1	TS	100302	
ADDED SHEET 2 & DEFLECTION BRACKET	TS	092002	
ADDED FOUNDATION DETAILS	TS	090202	
ECO	REVISIONS	BY	DATE

UNLESS OTHERWISE SPECIFIED
DIMENSIONS ARE IN INCHES
BREAK SHARP CORNERS
TOLERANCES ARE NOT CUMULATIVE

TOLERANCES SURFACE ROUGHNESS
 XX.X = ±.060
 XX.XX = ±.030
 XX.XXX = ±.010
 ANGLES = ±.5°
 PROTECTIVE FINISH =

DWN BY: STAVIG	DATE: 092002	TITLE: FLOORPLAN-PIPING (2) SHELL 112" PRESSURE	APPD:	MATERIAL:
EST WT: 0998.2484	SO#: E01979	PART NO: 0998.2484	SH 2 OF 2	



A1 D SIZE

C A D